

Insights

[Insights](#) • [Sector ETFs](#)

COVID-19 and Sector Performance: Lessons from Past Crises

Daniel Ung

CFA, CAIA, FRM, Head of Quantitative Research & Analysis, SPDR ETF Model Portfolio Solutions, State Street Global Advisors

Anthi Tsouvali

State Street Global Markets

Shankar Abburu

Quantitative Research & Analysis, SPDR ETF Model Portfolio Solutions, State Street Global Advisors

23 July 2020

Global equity markets faltered in March but have recovered most of their losses since. In spite of this, institutional investors remain doubtful about the strength and the durability of the rally and have so far shown a lack of conviction.

The scepticism had already started at the beginning of the year when investors questioned where in the business cycle the global economy was. A variety of other factors exacerbated the scepticism, including the trade dispute between the US and China, the uncertainty over the upcoming US elections and the COVID-19 pandemic. For this reason, investors mostly stayed on the sidelines, which explains why the State

Street Global Markets proprietary indicator shows that investor allocation to cash has remained at remarkably high levels.

All bear markets have different catalysts and no two crises are ever the same. Nevertheless, it is worthwhile to examine whether any lessons can be drawn from previous crises to inform the trajectory of the present (see Figure 1). To do this, we examined the four worst equity bear markets and performance turning points (peaks and troughs) and identified both the outperformers and underperformers, from the perspective of both performance and fundamentals.

Figure 1: Last four severe bear markets

	Crisis Start Date	Trough Date	Peak After Trough	Crisis End Date
Crisis 1 (Iranian Revolution)	Nov 80	Jun 82	Sep 82	Aug 82
Black Monday	Aug 87	Oct 87	Apr 89	Dec 87
Dot Com	Mar 00	Aug 02	Sep 06	Oct 02
GFC	Oct 07	Jan 09	Mar 11	Mar 09

Source: State Street Global Markets, Bloomberg Finance L.P. Excluded 1990s bear market. Due to the brevity of that bear market, we were unable to draw any meaningful conclusions. Past performance is not a reliable indicator of future returns.

Analysis of Past Crises

The main findings are:

- Before market peak: Before reaching market peak, **the Industrials sector demonstrated consistent outperformance during three out of four previous crises, up to 12 months before the peak** (see Figure 2). This is somewhat surprising as conventional wisdom suggests that economically sensitive sectors, such as Industrials, have often rallied in anticipation of economic recovery.
- Peak to trough: Once the market started floundering after the peak, **Consumer Staples trumped all other sectors and delivered a consistent level of outperformance in all crises except for Black Monday.**
- Trough to previous market peak: Immediately after the trough, **Consumer Discretionary appears to be a winner across all four crises**, as earnings improved quickly.

Share   **Figure 2: Performance in the run-up to market peak before the trough**

	Avg. Returns (%)				Avg (%)	Avg. EPS % change				Avg (%)
	Crisis 1	Black Monday	Dot Com	GFC		Crisis 1	Black Monday	Dot Com	GFC	
Communication	5	7	-4	-4	1	0	-17	2	-1	-4
Cons. Discr.	3	-3	3	0	1	-9	-5	7	5	0
Cons. Staples	7	0	5	8	5	1	0	-11	3	-2
Energy	-7	-7	-1	-2	-4	12	-38	63	13	13
Financials	-1	0	-3	-3	-2	5	18	37	1	15
HealthCare	8	1	11	6	6	8	20	4	-3	7
Industrials	10	3	6	0	5	-35	-2	-5	-4	-11
Info Tech	2	-1	-4	-5	-2	-3	4	30	7	10
Materials	1	2	-4	-2	-1	17	112	3	-2	32
Utilities	4	1	6	3	4	5	-8	-2	-5	-3

Source: State Street Global Markets, Bloomberg Finance L.P., FactSet, as of 20 July 2020. Past performance is not a reliable indicator of future returns.

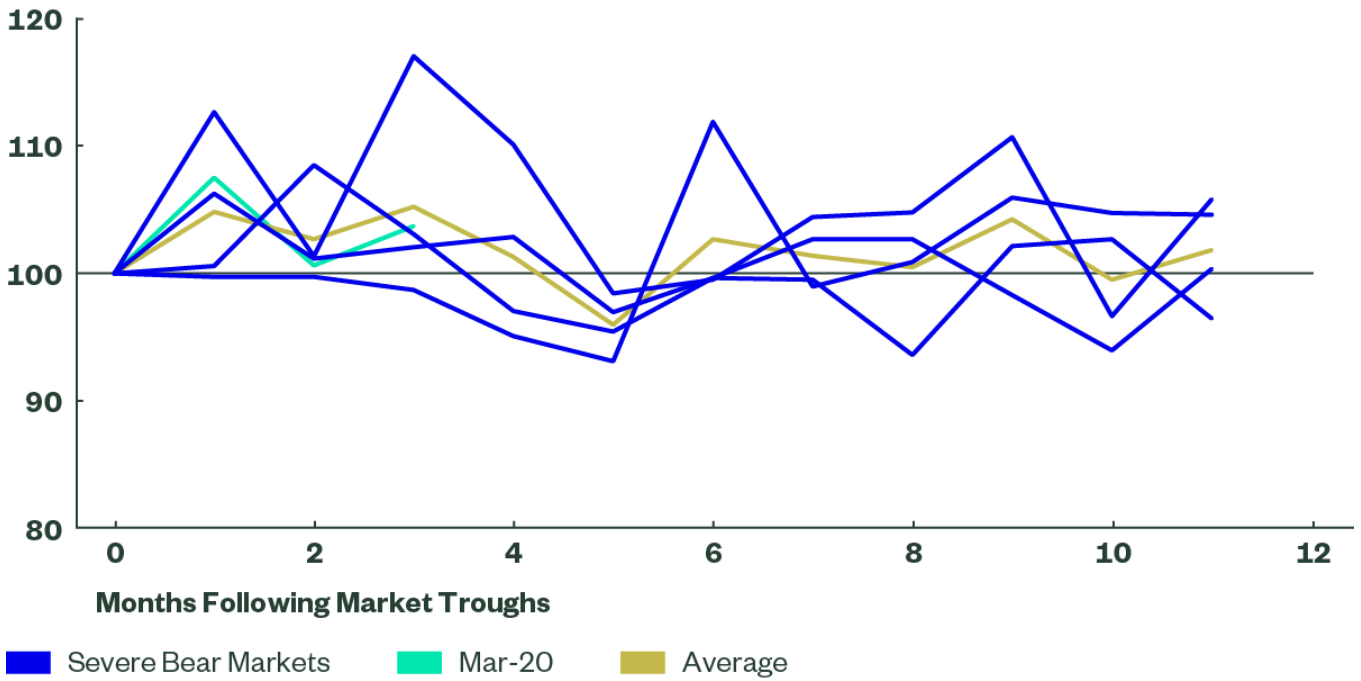
What has worked so far?

In terms of sector performance, during the current sell-off, Information Technology, Health Care and Consumer Staples have outperformed the wider US market. At the same time, Financials, Energy and Industrials have been hit the hardest.

In this current crisis, Consumer Staples did not hold up as well it did in months following the peak, compared to past bear markets. **On the other hand, Consumer Discretionary is one of the best performing sectors so far this year** (see Figure 3). This may suggest that the market believes the worst is behind us because, in previous crises, it was Consumer Discretionary that outperformed most during the recovery period.

If history and past bear markets are any guide, investors who believe recovery is imminent should look more closely at Consumer Discretionary (despite the recent rally) and avoid defensive sectors. On the other hand, those investors who still feel that the worst is yet to come may want to consider Consumer Staples and Utilities.

Figure 3: Consumer Discretionary is trading in line with history



Source: State Street Global Markets, Bloomberg Finance L.P., as of 20 July 2020. Past performance is not a reliable indicator of future returns.

Disclaimer



Questions? Feel free to Contact Us

Important Risk Information:

ETFs trade like stocks, are subject to investment risk, fluctuate in market value and may trade at prices above or below the ETFs net asset value. Brokerage commissions and ETF expenses will reduce returns. Changes in exchange rates may have an adverse effect on the value, price or income of an investment. Further there is no guarantee that an ETF will achieve its investment objective. SSGA SPDR ETFS MAY NOT BE AVAILABLE OR SUITABLE FOR YOU. THE VIEWS EXPRESSED/INFORMATION IN THIS SITE DOES NOT CONSTITUTE INVESTMENT ADVICE, FINANCIAL, LEGAL, REGULATORY, ACCOUNTING OR TAX ADVICE. INDEPENDENT ADVICE SHOULD BE SOUGHT IN CASES OF DOUBT. NEITHER THE INFORMATION NOR ANY OPINION CONTAINED ON THIS SITE CONSTITUTES A SOLICITATION OR OFFER TO BUY OR SELL SHARES OF THE FUNDS OR ANY OTHER FINANCIAL INSTRUMENT. Standard & Poor's®, S&P® and SPDR® are registered trademarks of Standard & Poor's Financial Services LLC (S&P); Dow Jones is a registered trademark of Dow Jones Trademark Holdings LLC (Dow Jones); and these

trademarks have been licensed for use by S&P Dow Jones Indices LLC (SPDJI) and sublicensed for certain purposes by State Street Corporation. State Street Corporation's financial products are not sponsored, endorsed, sold or promoted by SPDJI, Dow Jones, S&P, their respective affiliates and third party licensors and none of such parties make any representation regarding the advisability of investing in such product(s) nor do they have any liability in relation thereto, including for any errors, omissions, or interruptions of any index.

SPDR ETFs may be offered and sold only in those jurisdictions where authorised, in compliance with applicable regulations.

Information related to Mexico

This information does not constitute and is not intended to constitute marketing or an offer of securities and accordingly should not be construed as such. The Funds referenced herein have not been, and will not be, registered under the Mexican Securities Market Law (Ley del Mercado de Valores) and may not be publicly offered or sold in the United Mexican States. Disclosure documentation related to any of the aforementioned Funds may not be distributed publicly in Mexico and shares of the Funds may not be traded in Mexico.

European SPDR ETFs

SSGA SPDR ETFs Europe I Plc and SSGA SPDR ETFs Europe II Plc are investment companies with variable capital constituted as umbrella funds with segregated liability between sub-funds under the laws of Ireland and authorized by the Central Bank of Ireland pursuant to the European Communities (Undertakings for Collective Investment in Transferable Securities) Regulations 2011.

You should obtain the Prospectus and Key Investor Information Document (KIID) relating to specific SPDR ETFs and read them carefully prior to investing. For further information and the Prospectus/KIID describing the characteristics, costs and risks of SPDR ETFs, download a Prospectus or KIID [here](#), talk to your financial advisor, or obtain it from your local SSGA office.

US SPDR ETFs

The US domiciled SPDR ETFs named on this site are only permitted to be marketed into the relevant EEA jurisdiction pursuant to either Article 42 of AIFMD (as implemented under national laws of such member state); or (ii) can otherwise be lawfully offered or sold (including on the basis of an unsolicited request from a professional/Qualified investor). Some of the US domiciled SPDR ETFs mentioned in this site are alternative investment funds for the purpose of the European Union Alternative Investment Fund Managers Directive (Directive 2011/61/EU) ("AIFMD"). SSGA Funds Management, Inc. and State Street Global Advisors Trust Company are the alternative investment fund managers ("AIFMs") of these Funds.

Before investing, consider the funds' investment objectives, risks, charges and expenses. To obtain a prospectus which contains this and other information, download a prospectus [here](#), or talk to your financial advisor. Read it carefully before investing.

© 2020 State Street Corporation. All rights reserved.

[Privacy & Cookie Policy](#)

[Terms & Conditions](#)

[Complaints](#)

[Sitemap](#)